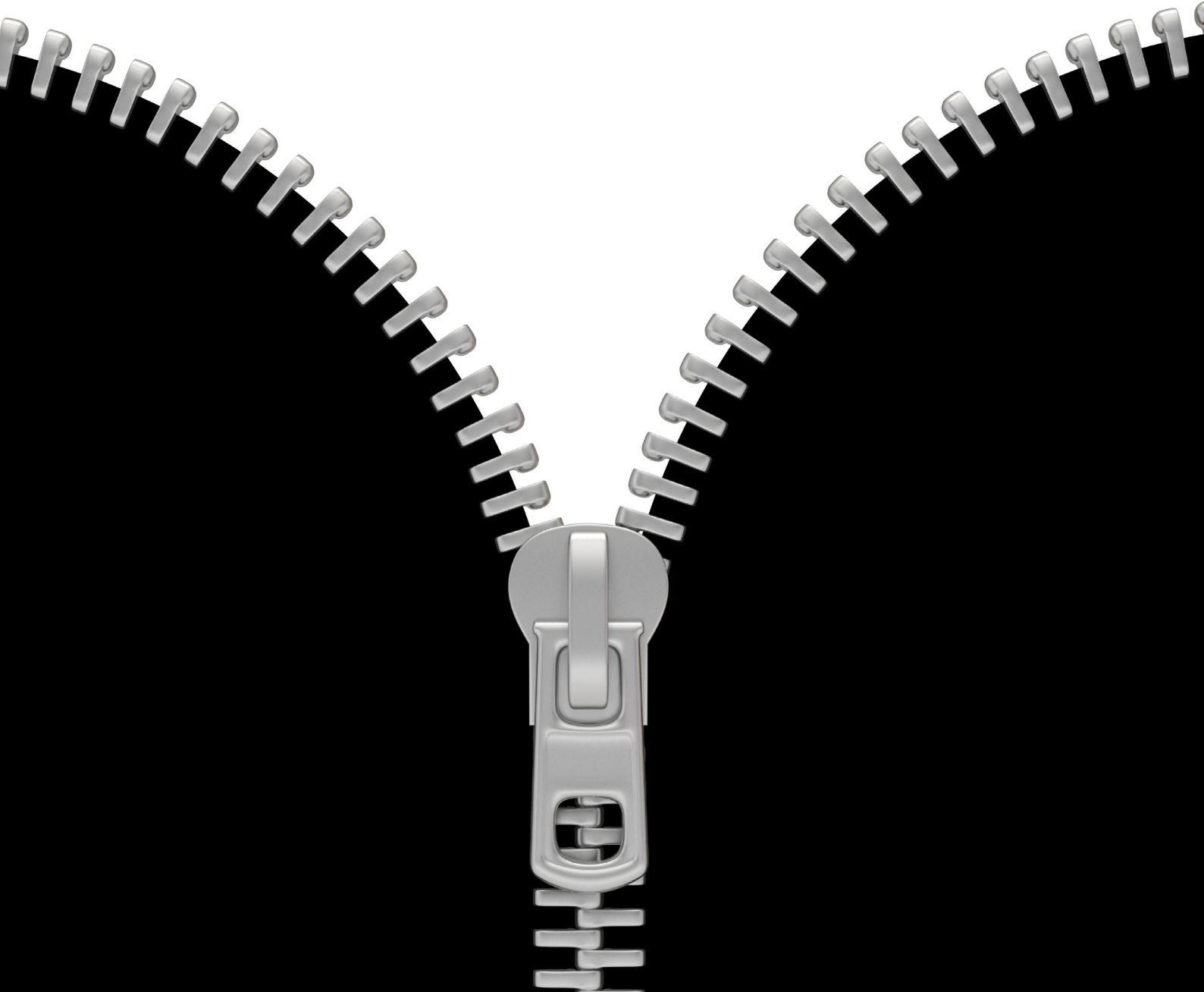
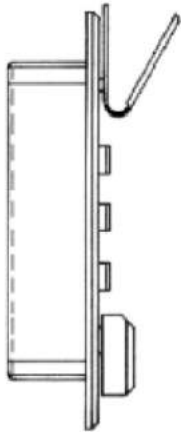


PRODUKTKATALOG

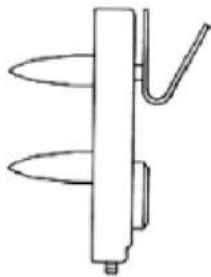


Zahlenschloss



1636

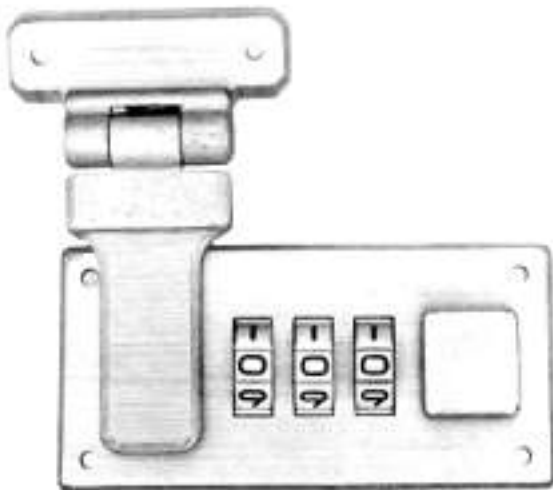
65 x 32 mm



1640

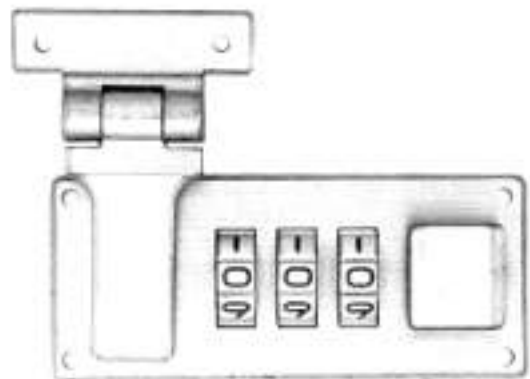
39,5 x 40 mm

Zahlenschloss



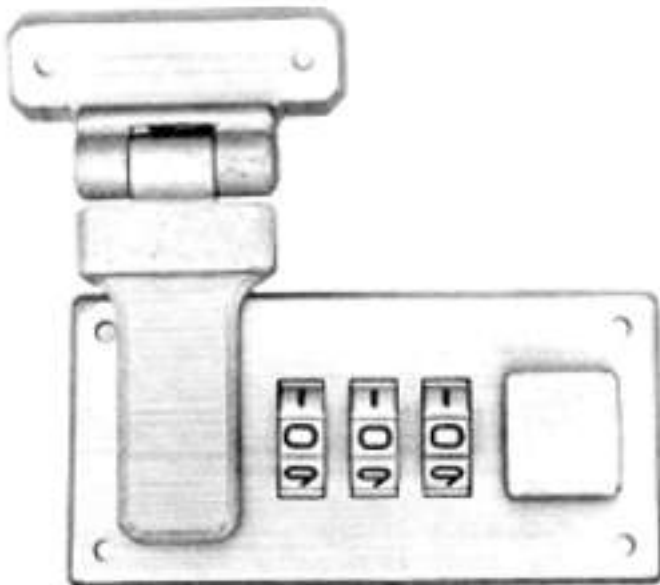
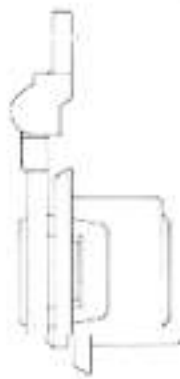
1146

Messing / Nickel sattiniert
brass / nickel satin finish
65 x 32 x 2,5



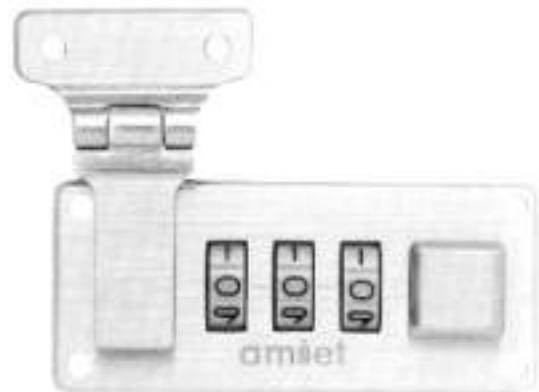
1142

Messing sattiniert
brass satin finish
63 x 28 x 2,5



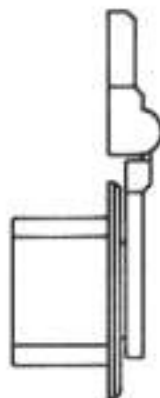
1148

Messing / Nickel sattiniert
brass / nickel satin finish
74x40x 2,5 mm



1141

Messing / Nickel sattiniert
brass / nickel satin finish
64 x 28 x 2



Zahlenschloss



1139 NT
65 x 32 mm



1133 NT
65 x 28 mm



PVC-Rahmen



PVC Rahmen



1180 ZF schwarz
58 x 30 mm



1138 KL
63 x 27 mm

Exclusive Zahlenschloss



OCS 1



OCS 2

Gold

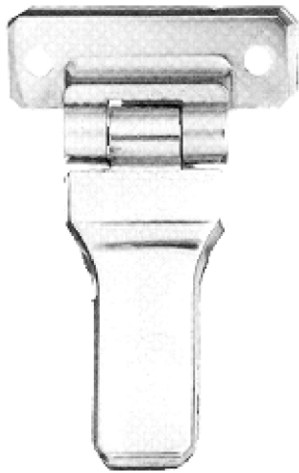
Achtung !!!!!
mindest Mengen



OCS 3

A4

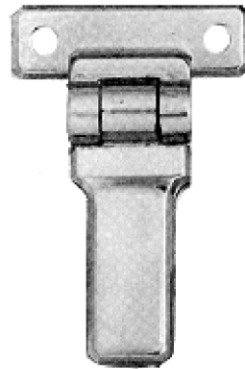
Oberteile solo



1139

*Druckguss
diecast zinc
Nickel Gold schwarz*

*38 x 14
55 x 5*



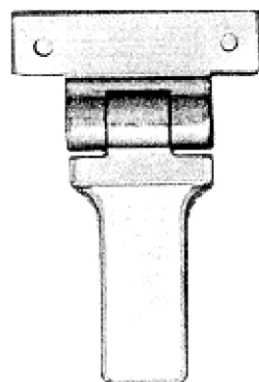
1133

*Druckguss
diecast zinc
Nickel Gold schwarz*

*32 x 11
45 x 5*

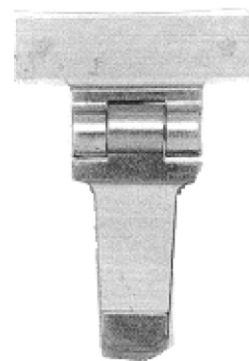


1138



1142

*Messing sattiniert
brass satin finish
31,5 x 11
46,5 x 3,5*



215742

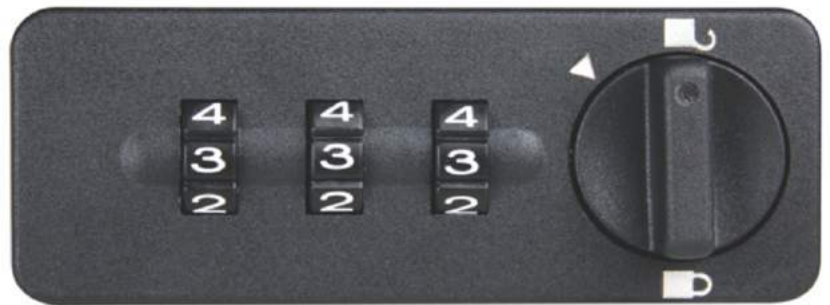
*Messing sattiniert
brass satin finish
32,5 x 10,5
44 x 3*

Schrank - Kombinations - Verschlüsse



1147

rechts + links
61mm x 26mm



1157

rechts + links
72mm x 28mm



1153 CCC + CCV

rechts + links
72mm x 28mm

CCV=Verwischmechanismus
nach dem Aufsperrern verdrehen
sich die Zahlenräder automatisch

CCC= nach dem Aufsperrern
bleibt der Zahlencode sichtbar



1844

rechts + links
86mm x 30mm

Kofferverschluß



1319 OS NT
1319 OS MK

34 x 64 mm



1319 SL NT
1319 SL MK

34 x 64 mm



1312 OS NT

32 x 42,5 mm



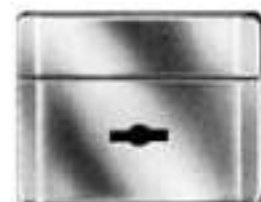
1320 SL NT

44,5 x 59 mm



1220 SLA KL

86,5 x 22 mm



1840 SL MK

37,5 x 29mm

Kofferschloss



3123
45 x 80 x 11



3124
Stahl vernickelt 45 x 70 x 11



13041651
59 x 35



1366109139 flaches OT
verchromt poliert
59 x 35 x 11



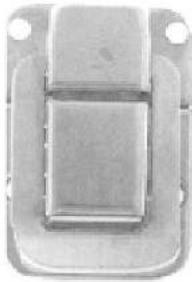
1366316487 H = hohes OT
verchromt poliert
59 x 35 x 11



**mind. Bestellmenge
1000 Stück
Lieferzeit ca 3 Monate**

B 2

Kofferverschluß



234519

32 x 46 x 9
Gold



C-91

51 x 30 mm



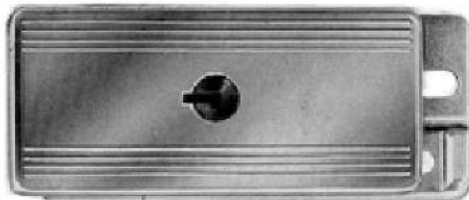
1106

Stahl : vernickelt
Steel : nickel plated
28 x 42 x 1



1144

18 x 29 x 1



234531

Stahl : vernickelt
Steel : nickel plated



82365

Kofferschloss



1411
54x47 mm



1402
46x45 mm



1310
60 x 40 mm



1307
vernickelt
22 x 49 x 13

Stahl: chrom nickel / Stahl: verzinkt schwarz



1264
90 x 21 mm



1220
Vernickelt
86,5 x 22 x 13



1404516120
67 x 63 mm

Kofferverschluß



1327 SLA NT
1327 SLA MK
54,7 x 45 mm



1323 SL NT
1323 SL MK
54,7 x 45 mm



1333 SLA NT
1333 SLA MK
54,7 x 45 mm



1434 SKS NT
1434 SKS MK
45,5 x 40,5



1434 SL NT
1434 SL MK
45,5 x 40,5



234545

Stahl : vernickelt / vermessingt
Steel : nickel / brass plated

51 x 41 x 9

Kofferschloss



hohe Kante aufliegend

2374..... 75 x 46 x 8
55 x 40 x 8
55 x 32 x 8



flache Kante einlassend

2375..... 75 x 43 x 2
55 x 40 x 2
55 x 32 x 2

Messing Bandstahl : vernickelt / vermessingt
Steel brass clad : nickel plated / brass lacquered



Flache Kante einlassend
215742



hohe Kante aufliegend
216042



237765

Gold 66 x 34 x 2 mm

B 6

Kofferschloss



44 x 19 mm



44x39 mm

2163 - 02 altmessing



28x 10,5mm



28 x 30 mm

2164 - 02 altmessing

Exklusive Kofferverschlüsse



OCS 2 K
Nickel + Gold



OCS 3 K
Nickel

mind Bestellmenge
25 Paar je Farbe

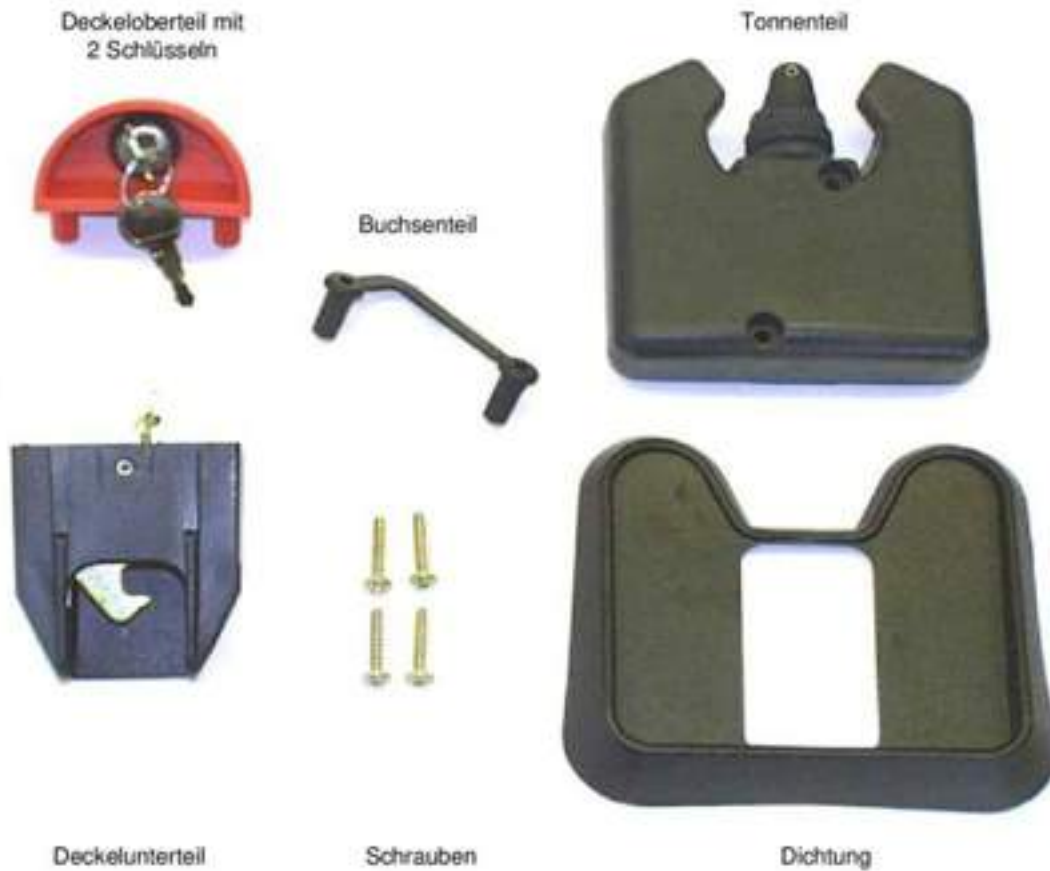


707 S Gold

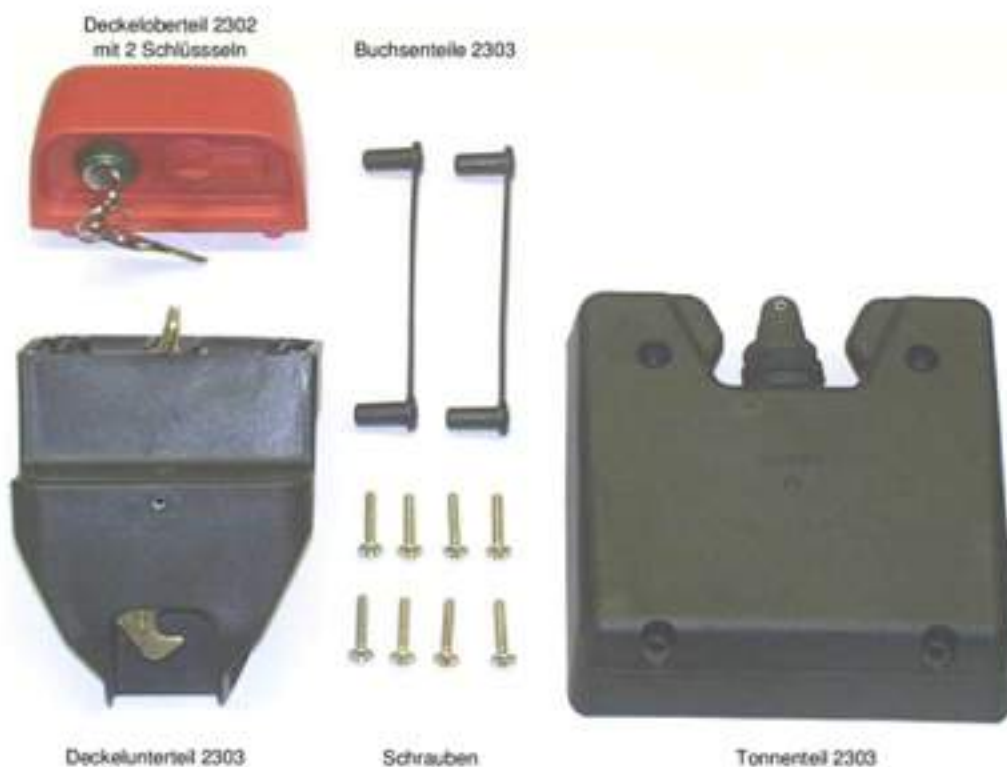
mind. Bestellmenge
25 Stück je Farbe

B 10

Mülltonnenschloss 2300 mit Schlüssel für 2-Rad-Tonnen



Mülltonnenschloss 2303 mit Schlüssel für 4-Rad-Container mit Flachdeckel



Mappenschloss



3113
Stahl vernickelt
43x54 mm



bitte anfragen



411034
Nickel orange
Gold rot



1542
schwarz mit roten Reflektor
= Reste ca 340 Stück



003115
42 x 45 mm



1165500001

Mappenschloss



3108

Stahl : vernickelt / altmessing / schwarz
Steel: nickel / antique brass / black
27,5 x 38 x 11,5



3105

Stahl : vernickelt
vermessingt
30 x 50



3112

Stahl : vernickelt / vermessingt
altmessing /
Steel : nickel / brass plated
brass antique
23,5x34x11



3111

Vernickelt
24 x 18 mm



3119

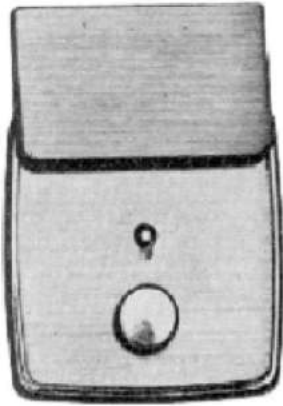
34x39mm



3121

28x 32 mm

Mappenschloss



4680

48,5 x 65 x 6,5

Gold



4681

40 x 54 x 5,5

Nickel



4682

Nickel



3993

38 x 67 x 7

Zinkdruckguss : vernickelt / vermessingt
 altmessing / nickel matt
 diecast zinc : nickel / brass plated
 nickel dull / antique brass



D 404

5 cm
Gold - Nickel
 altmessing



4650

37,5 x 41,5 x 6,5
 Messing : vernickelt / vermessint
 altmessing / schwarz

C 3

Exclusive Mappenschloss



3990



OCS DK 5

Scharniere



2201 / 120-120 NT

35 x 40 mm



2201 / 121 - 121 NT

35 x 40 mm



2201 / 122-122 MK

35 x 40 mm



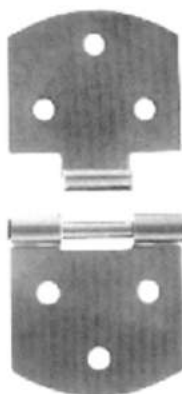
2201 / 123-123 MK

35 x 40 mm

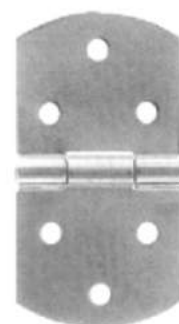


2204 NT

40,5 x 48 mm



2189



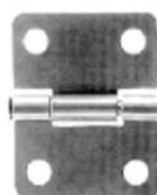
2191

32 x 55 x 2

Material : Stahl : vernickelt / vermessingt

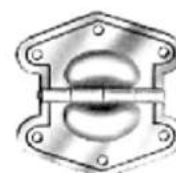


2188



2190

27 x 33,5 x 1,5



2192

Exclusive Scharniere



Bauli 14

Nickel plated

65 x 40mm



4 - 539

Nickel

60x 35 mm

Ecken



2320 45 mm



2320 40 mm

Stahl : vernickelt / vermessingt
Steel : nickel / brass plated



2320 35 mm



2320 30 mm



2320 25 mm

Stahl : vernickelt / vermessingt
Steel : nickel / brass plated



2320 20 mm



4413

38,5 x 38,5

5 mm



4405

17 x 17

2,5 mm



4411

28 x 28

3,5 mm



4410

23 x 23 x 23



4404

30 x 30

5 mm

Innen / Inside :

Ecken



2166

37 x 33 x 1



2167

37 x 33 x 1



2148

33 x 13 x 0.8

*Stahl : vernickelt / vermessingt
Steel : nickel / brass plated*



2381

50 x 31 x 1,5



2380

37 x 22 x 1

*Stahl : vernickelt / vermessingt
Steel : nickel / brass plated*



2257

77 x 16 x 2
innen 31



2256

70 x 14 x 2
innen 25

*Stahl : vermessingt
Steel : brass plated*

Deckelhalter



2233

65 x 9 x 1,5

mind. Bestellmenge je Farbe
100 Stück



2235

78 x 10 x 2

Stahl : vernickelt / vermessingt
Steel : nickel / brass plated



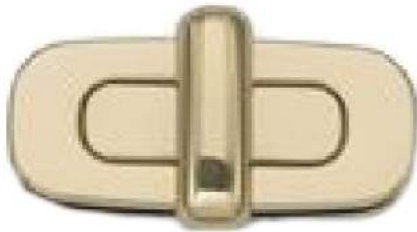
2229

= Reste

75 x 13 x 2,5

Stahl : vernickelt / vermessingt
Steel : nickel / brass plated

Verschlüsse



4709
64 x 28 mm



4687
44 x 33 mm



4701
41 x 25 mm



4724
23 x 18mm



4736
32 x 20 mm

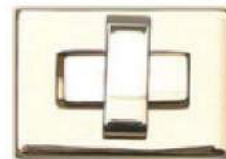
*Zinkdruckguss: vermessingt vernickelt
altmessing nickel matt*



4739
37x 20 mm



4722
25 mm



4707
39 x 28 mm

*Stahl: vermessingt vernickelt
altmessing*

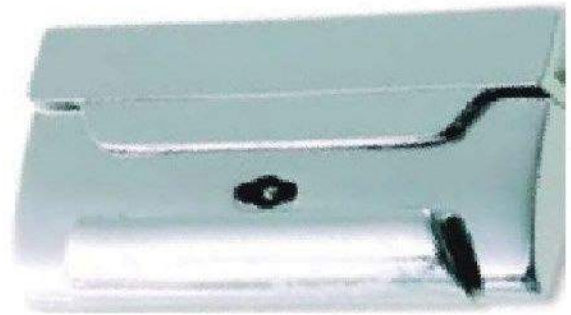
Verschlüsse



4748

45,5 x 43,5 x 6,5

Stahl : vermessingt/ vernickelt/ alfmessing
Steel: brass / nickel plated / brass antique



D 186



Stahl : vermessingt / vernickelt
Steel: brass / nickel plated

81273

45 x 30 mm



2663

24 x 42 mm



4692

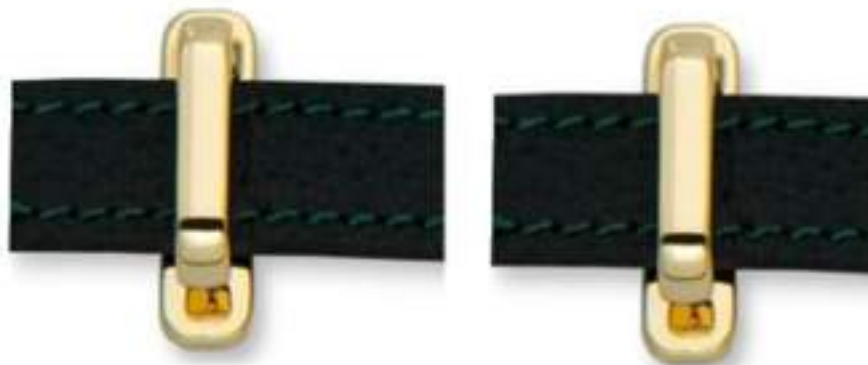


D/1317

Verschlüsse



004760 Gold + Nickel



004761 Gold + Nickel



4703

18 x 30 x 2,5

Stahl : vermessingt
Steel : brass plated



4745

64 x 17 x 12

Stahl : vermessingt / vernickelt
Steel : brass / nickel plated



DK 2360

Unterteil solo
underpart solo
35 x 20
Höhe /high : 35 x 4

Verschlüsse



D / 364

26 x 35 mm



82830

28x38 mm

mind. Menge 24 Stück



4733

20mm oben
23 mm lang



4731

30mm oben
35 mm lang



4732

32mm oben
40mm lang

Verschlüsse



82952

55 x 37 mm
oben 44 mm



4741

40 x 42



81722

48 x 32 mm
oben 40mm

nur noch Reste



D 362

45 x 33 mm



D 361

56 x 32 mm
oben 38mm

G 5

Magnetverschlüsse



4699

4658

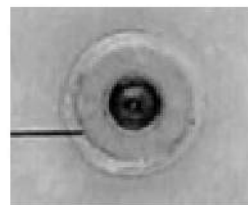
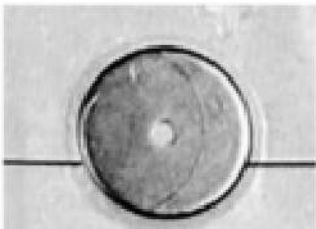
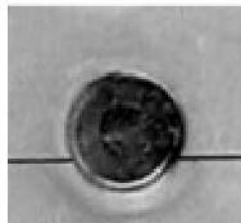
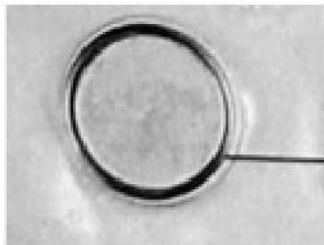
4654

4640

Oblt. 22mm zum schrauben
Zugkraft
Nickel matt Nickel glanz
altmessing vermessingt

19mm
2,8 kg
Nickel glanz vermessingt altmessing

19mm
2,7 kg
nickel glanz vermessingt



2559

4642

4641

19mm
Zugkraft 5 kg

12 mm
2 kg

zum einnähen in PVC Folie

Gold
21mm 16mm



4705

54 x 38 mm



4742

85 x 50 mm



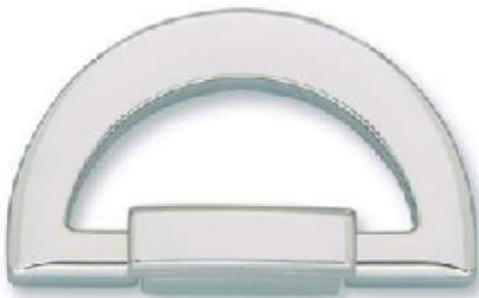
83440

59mm x 40mm



83441

35x37mm



83439

G 7

Armbandverschlüsse



AG 22830

AG 22870

AG 22829



AG 26738

AG 26739



AG-FC4009



AG 019



AG 006



AG 029

AG 030



AG 26948

27 x 14mm
innen 10mm



AG 00512



K/1677

Verschlüsse



SR 50

Innen : 50 mm
60 x 81 mm



SR 40

40 mm
47 x 78 mm



SR 30

Innen : 30 mm
37 x 68 mm



SR 25

25 mm
32 x 68 mm



SR 20

20 mm
26 x 54 mm

Material : Nylon / Acetal / Delrin 500 T
Farbe : schwarz



D/684-20



25mm



30mm



40mm

Material Zinkdruckguss

Verschlüsse



2161-02

67mm



2160

50mm



2159

40mm



D 102



D 103



1642

Bügel



81746 .. 40cm 45 cm 50 cm

Stahl : altmessing



81485 ... 40cm 45cm 50cm

Stahl : altmessing



7207 ... 30cm 35cm 40cm 50cm

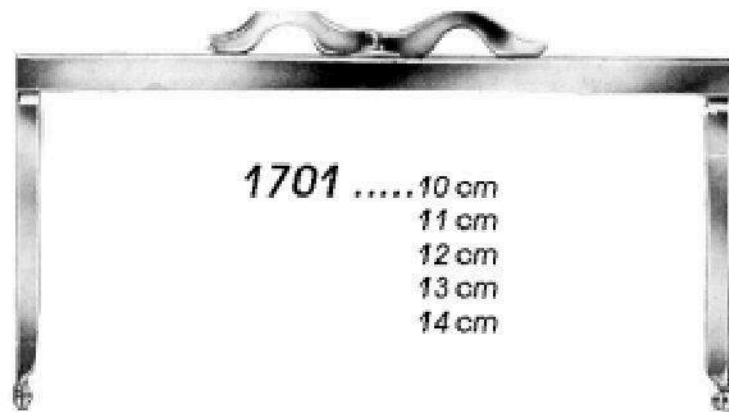
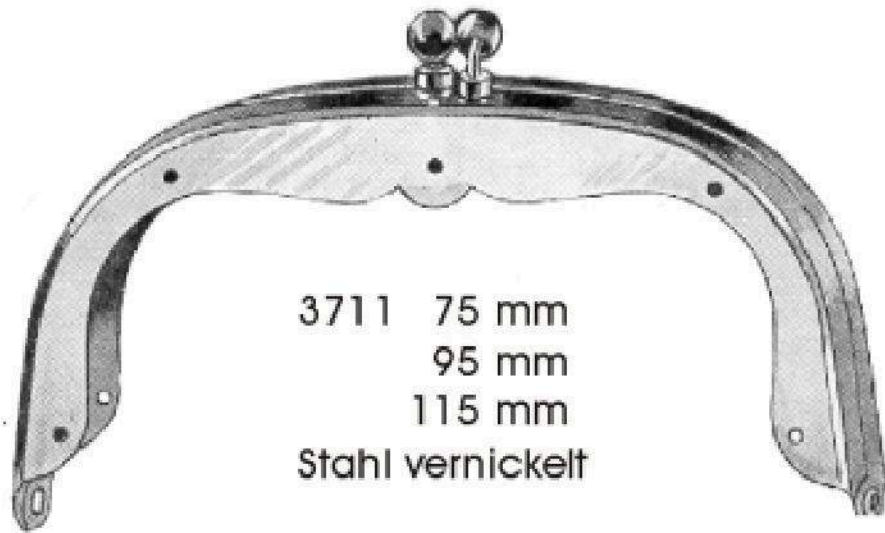
Stahl : altmessing



K/ 2046 ... 10cm - 40 cm

Federverschluß Stahl

Bügel



ab 50 Stück je Größe und Farbe

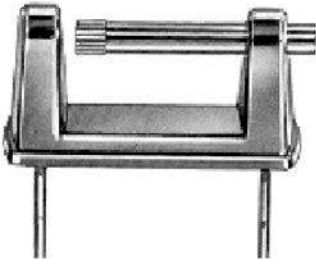


5219

Börsenbügelscharnier

H 2

Griffhalter



628420

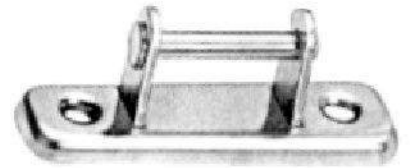
36 x 19 x 12
innen : 20 mm

Zinkdruckguss : vermessingt / vernickelt / altmessing / black
diecast zinc : brass / nickel plated / brass antique / black



628520

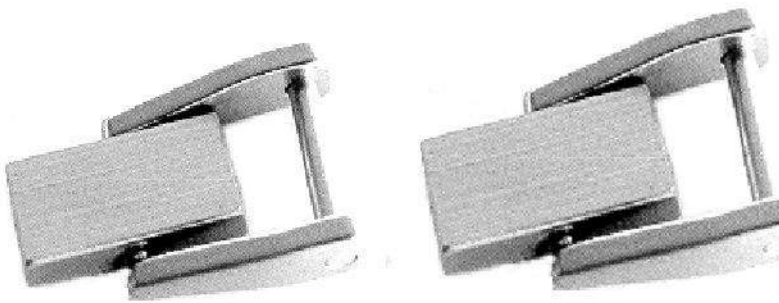
36 x 19 x 12
20 mm



5125

55 x 15
innen ; 20 mm

Stahl : vermessingt / vernickelt
Steel : brass / nickel plated



4669

20x 28
Ring 20mm

22 x 30
25mm

4668

altmessing



5122

40 x 16
20 mm

Stahl : vernickelt
Steel. Nickel plated



5123

43 x 16
13 mm

vermessingt



5117

27 x 9
10 mm

schwarz

Griffhalter



4683
9 x 46
20 mm



4414
Altmessing + Nickel



D 350
Gold



4725



4679
12 x 25
Ringe : 20 mm



4661
9 x 22
16 mm



4656
9 x 21
11 mm

**Zinkdruckguss
Nickel und Gold**

**Stahl
vermessingt**

Griffhalter



4753

18 mm



4415

27 x 14
21 mm

Finish: vermessingt / vernickelt / altmessing



4723839

20 x 7 mm
Ring 14mm



4706

19 x 10
10 mm



4719

18 x 14
13 mm



4416

Ring 13mm innen
Klemme 20 x 7 mm

Finish ; vermessingt / vernickelt / altmessing



4691

70 x 25 mm



83438

29 mm

Griffhalter



82837



4678

43 x 31
24 mm



4673

15 x 39
10 mm



4613

23 x 23

Stahl : vermessingt / vernickelt
Steel : brass / nickel plated



4693

9 x 20



4667

16

Zinkdruckguss : vernickelt / vermessingt / antimessing
diecast zinc : nickel / brass plated / antique brass



4662

13 x 18
10 mm



4651

10 x 22
10 mm



4636

13 x 14
9 mm

Zinkdruckguss : vermessingt / vernickelt
diecast zinc : brass / nickel plated

Stahl : vernickelt / vermessingt / antimessing
Steel : nickel / brass plated / antique brass



4581

9 x 18 mm

vernickelt



4653

23 mm
6 mm



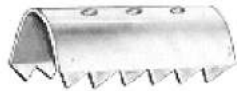
4696

30 x 6
Innen : 17 mm

Griffhalter



06/196/7/ 25



06/196/7/20



06/196/7/15



4317



4316

Klemmen
clamps
Stahl : vernickelt
Steel : nickel plated



4275

29 x 4,5 mm

Stahl : vernickelt / vermessingt
Steel : nickel / brass plated



4634

vermessingt
brass plated



7126

12,5 x 8,5 mm

Alu : vermessingt / vernickelt
nickel / brass plated



7125

12 x 12,5 mm



4314



4315

8 x 8 mm

Stahl : vermessingt
Steel : brass plated

Griffhalter



513225

33 x 40 mm
Innen ; 25 mm



513220

26 x 36 mm
20 mm



513620

Vermessingt
altmessing

Stahl : vernickelt / vermessingt
Steel : nickel / brass plated



5114

23 x 49



5116

18 x 43



697

40 x 16 mm



5107

14 x 37



5106

12 x 30

Gold

Stahl : vernickelt / vermessingt
Steel : nickel / brass plated

Gold

Griffhalter



513425

35 x 32 mm
Innen : 25mm



513420

29 x 27 mm
20 mm



513415

24,5 x 23 mm
15 mm



513525



513520



C/5520 30



513820



82838

20 + 30mm



5139

15 - 20 - 30 mm



5140

25mm



5137

15-20-25-30mm

Ketten



7024

120 cm 7,5 x 3 mm
Messing : vernickelt / vermessingt
Brass : nickel / brass plated



7022

120 cm 5 x 2,5 mm
Stahl : vernickelt / vermessingt
Steel : nickel / brass plated



7027

120 cm 5 x 2,5 mm
Stahl : vernickelt / vermessingt
Steel : nickel / brass plated



7020 110 cm 4,2 mm
7019 80 cm 4,2 mm

Messing : vernickelt / vermessingt
Brass : nickel / brass plated



7018

30 cm 2,5 mm
Messing : vernickelt / vermessingt
Brass : nickel / brass plated

Ketten



C/6060 vergoldet



FK 14 Messing

Glieder rund : 11 x 16 mm



FK 13 Messing

Glieder rund 8,5 x 14mm



FK 15 Messing

Glieder flach 9,5 x 14mm



FK 12 Messing

Glieder flach 7,5 x 12 mm



FK 1

5 mm

Stahl : vermessingt / verrickelt

Steel : brass / nickel plated



7025

4,5 x 3,5 mm

Stahl : vermessingt

Steel : brass plated

K 2

Haken



50/24

Innen: 50mm
Höhe : 72 mm
vernickelt



50/25

40mm
72 mm

Nickel Gold atm. Schwarz



50/27

25mm
72 mm



50/15

Innen: 19 mm
Höhe 88mm
Nickel



50/16

23mm
80mm
Nickel Gold alt sz



4218

20 mm
73 mm
Nickel

Haken



50/43

Innen 40mm



50/42

30mm



50/41

25 mm



50/37

Innen 30 mm



50/39

25mm



50/40

20mm

50/36
Innen 40mm

Farbauswahl

Nickel - Gold - Altmessing - Nickel matt
Canna fucile = schwarz nickel

Haken



50/34

Innen: 40mm
Höhe 70mm



50/33

30mm
65mm



50/28

Innen : 20mm
Höhe : 64 mm



50/26

17mm
57 mm



60250045

46mm

Nickel Gold altm. Schwarz

Haken



50 / 29

14 mm
40 mm



50 / 14

18 mm
38 mm



50 / 32

17 mm
40 mm

Nickel Gold altmessing



C/ 4330-17
Vernickelt



50 / 17

13 mm
35 mm



50 / 21

8 mm
33 mm



2014

3 mm
25 mm
vernickelt / vermessingt

Haken



50/18

6cm lang
Oese 13mm



50/19

5cm lang
Oese 10mm



50/23

32mm
Oese 8mm



83407

39mm
8,5mm



D 431



D 355

8,5 cm lang
Oese 27 mm



050/22

6 cm lang
Oese 20mm



50/20

6cm lang
Oese 25 mm

L 5

Haken



50/44

**68 mm
innen 40mm**



50/50

**68mm
innen 30mm**



82856 = 15mm

82855 = 10mm



**D 372 - 50 mm
40 mm
20 mm**



**D 299 - 35 mm
D 298 - 26 mm**

Haken



202185

85mm
Oese 19mm



202170

70mm
16mm



202160

60mm
14mm



202150

50mm
11mm



202140

40mm
10mm



770066

117 mm
Oese 13mm



770067

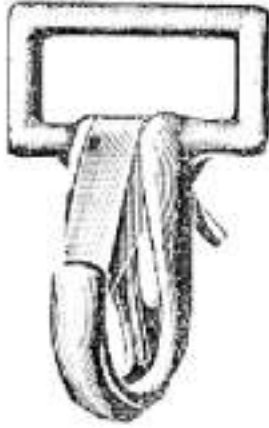
101 mm
11mm



770068

86 mm
10 mm

Haken



100 / 25

Innen : 23 mm
höhe : 59 mm

Zinkdruckguss : vernickelt
diecast zinc : nickel plated



203025

25 mm
53 mm



203020

20 mm
50 mm

Stahl : vernickelt



206620

Innen : 21 mm
27 x 54



2067

17 mm



203740

40mm
innen 20mm



203730

30mm
18mm



203530

25mm
10mm



2064

Innen : 20 mm
Höhe : 29 mm



2068

20 mm
25 mm



206409

16 mm
25 mm



2065

23 mm

Stahl : vernickelt / vermessingt
Steel : nickel / brass plated

Haken PVC



RSHN 40

Innen : 40 mm
Höhe : 60 mm



RSHN 30

30 mm
60 mm



RSHN 25

25 mm
60 mm



SSHN 40

Innen : 40 mm
Höhe : 70 mm



SNH 40

40 mm
58 mm



SNH 30

30 mm
58 mm



SNH 25

Innen : 25 mm
Höhe : 58 mm



SNH 20

20 mm
58 mm

Material : acetal
Farbe : schwarz

Ringe geschweißt + offen



206040

Innen : 40 mm
Ringstärke : 5 mm



206035

35 mm
4,5 mm



206030

30 mm
4 mm



206025

25 mm
3,2 mm



206023

Innen : 23 mm
Ringstärke : 3 mm



206020

20 mm
3 mm



206018

18 mm
2,5 mm



206016

16 mm
2,5 mm



206015

Innen : 15 mm
Ringstärke : 2,5 mm



206014

14 mm
2,2 mm



206012

12 mm
2 mm



206010

10 mm
2 mm



206008

Innen : 8 mm
Ringstärke : 2 mm



206007

7 mm
2 mm



206006

6 mm
1,2 mm



206005

5 mm
1,5 mm



206004

4 mm
1,2 mm

Material : Stahl - vernickelt / vermessingt / altmessing
Steel : nickel / brass plated / antique brass

Ringe geschweißt + offen



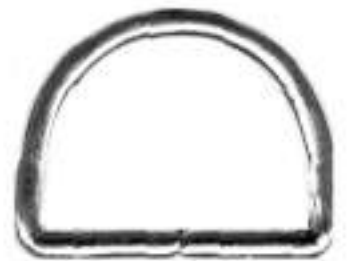
208245

Innen : 45 mm
Ringstärke : 5 mm



208240

40 mm
4,5 mm



208235

35 mm
4 mm



208230

Innen ; 30 mm
Ringstärke : 3,5 mm



208227

27 mm
3 mm



208225

25 mm
3 mm



208223

23 mm
3 mm



208220

Innen : 20 mm
Ringstärke : 2,5 mm



208218

18 mm
2,5 mm



208216

16 mm
2 mm



208214

14 mm
2 mm



208212

12 mm
2 mm

Material : Stahl :- vernickelt / vermessingt / altmessing
Steel : nickel / brass plated / antique brass

Ringe massiv



2084....

30-25-20-16-10 mm



2088....

80-50-40-30-25-20 mm



2091 30 25 mm

M 3

Ringe



2089 15 -20-25-30-40mm



2125 .. 50 - 40 - 30 - 25 - 20 - 15 mm



2086 - 60 - 50 - 40 - 30 - 25 - 20 - 16 mm

Ringstärke : 4 mm

Material : Stahl / Vernickelt
hochwertige Ausführung



209025

Innen : 25 mm
Ringstärke : 4 mm

24/465/40

Innen : 39 mm
Dinnestärke : 3 mm

341

23 mm
3 mm

3125

18 mm
2.5 mm

4444

14 mm
2.5 mm

Schlüsselringe



312225

25 mm
3 mm



312220

20 mm
3 mm



312215

Innen : 15 mm
Ringstärke : 3 mm



3121-20

Flacher + Runder Draht
vernickelt -vermessingt



312210

10 mm
1,5 mm



312207

7 mm
1,5 mm



312205



312228 FL



312225 FL



312220 FL

Material : Stahl gehärtet / vernickelt / vermessingt
" Steel hardened / nickel / brass plated

Ringe PVC



DR 40



DR 30



DR 25



DR 20



SQR 50



SQR 40



SQR 30



SQR 25



SQR 20

Material Nylon

Gürtelschließen massiv



210140



210240



207430

Innen : 30 mm
42 x 41



210440

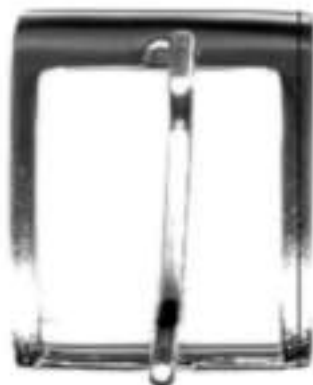


210435



210430

Nickel sattiniert



210130
Innen 30 mm



210135

Gürtelschließen massiv



209345
45mm



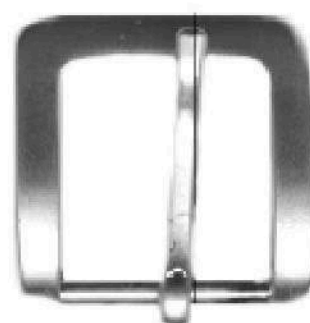
209340
40mm



209335
35mm



209330
30mm



209325
25mm



210540
40mm



210530
30mm



210730
canna fucile

Gürtelschliessen massiv



2095 .. 40 - 30 - 25 mm

altsilber



MB 6983 50

VLP + NP



2105 50

altmessing

N 3

Gürtelschließen massiv



209640
40mm



209635
35mm



209735
35mm



209630
30mm



210640
40mm



210630
30mm

Gürtelschließen



207145

Innen : 45 mm
60 x 43



207140

40 mm
53 x 48



207135

35 mm
47 x 42

Nickel / Gold



207130

Innen : 30 mm
43 x 20



207125

25 mm
36 x 38



207120

20 mm
31 x 33

Material : Stahl / vernickelt
" Steel / nickel

Nickel / Gold

Gürtelschließen



GX 9543 / 40

VLMC/MVN/AS



GX 6273/ 35

AS



GX 1760/35

NS



GX9585/35

NS/CF



GX 0890/ 40 3 tlg.

AS spezial silber



GX 6115-35

N 6

Gürtelschließen

Material Messing



BP0037D/35



**209850
Nickel**



BP0035/35



BP0041/35



BP0043/35



BP0042/40



BP0044/40

Gürtelschließen



210935

Zinc
45x 50 mm
innen 35mm



210840

Messing Nickel
50x55 mm
innen 40mm



211140

Zinc
51x80mm
innen 40mm



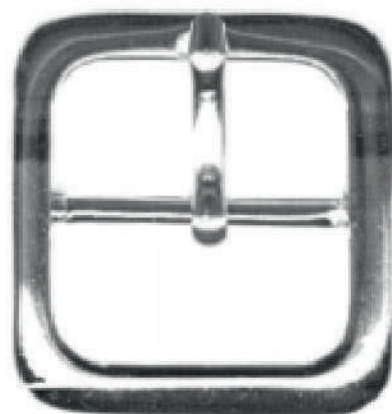
211235

Zinc
45x68mm
innen 35mm

Doppelschließen massiv



207345
60 x 70 mm
innen 45 mm



207340
65 x 57 mm
innen 40 mm



207340 ST



207335

Doppelschließen massiv



209230

Innen : 30 mm
42 x 48



209225

25 mm
35 x 42



209220

20 mm
30 x 35



209216

16 mm
24 x 26



207315

15 mm
22 x 40



207325



207320

20 mm
26 x 35



207316



2073120

20 mm
31 x 34



2073115

Innen : 15 mm
25 x 30



207314

14 mm
20 x 24



2073112

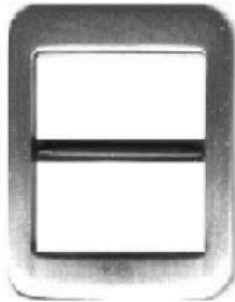
12 mm
18 x 23

- 10mm

Material : Zinkdruckguss / diecast zinc

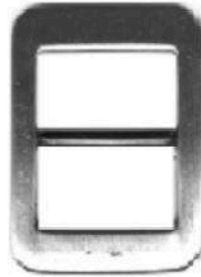
Finish : vermessingt / vernickelt / altmessing / nickel matt
" brass / nickel plated / antique brass / nickel dull

Schiebeschliessen



212125

Innen : 25 mm
34 x 45



212120

20 mm
29 x 40



212025

25 mm
34 x 33



212020

Innen : 20 mm
27 x 26

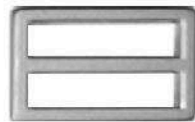
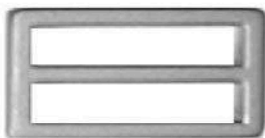


212016

16 mm
23 x 26

Material : Zinkdruckguss

Finish: vermessingt / vernickelt / nickel matt / altmessing



2122 15 -20-25-3040-50 mm



2123 40 - 30 - 25 - 20 mm

Klemmschließen



213232

Innen : 32 mm
45 x 57



213226

26 mm
37 x 49



213221

21 mm
29 x 36



213216

Innen : 16 mm
23 x 34



213125

25 mm
29 x 25



002371

Innen 45 mm
65 x 45

Zinkdruckguss : vernickelt / vermessingt
diecast zinc : nickel / brass plated



Rollschnallen massiv



D 430 - 20 mm



D 430 - 25 mm

Nickel Gold Altmessing Canna Fucile



D 430 - 30 mm



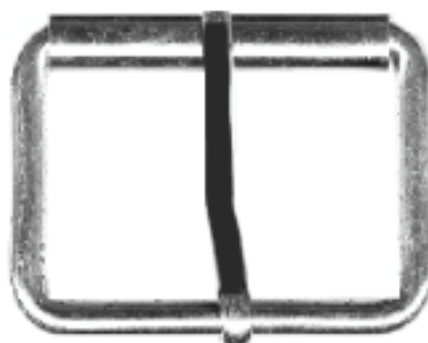
D 430 - 40 mm

Rollschnallen geschweißt + offen



205050

Innen : 50 mm
Ringstärke : 5 mm



205045

45 mm
5 mm



205040

40 mm
4 mm



205035

Innen : 35 mm
Ringstärke : 3,5 mm



205030

30 mm
3,5 mm



205025

25 mm
3,5 mm

*Material : Stahl : vernickelt / vernessingt / altmessing
Steel : nickel / brass plated / antique brass*



205022

Innen : 22 mm
Ringstärke : 3 mm



205020

20 mm
3 mm



205018

18 mm
2,5 mm



205016

Innen : 16 mm
Ringstärke : 2,5 mm



205014

14 mm
2,5 mm



205012

12 mm
2 mm

Doppelrollschließen



205330

Innen: 30mm



205325

25mm



211719

19mm



205316



211720

*20 mm
26 x 29*



211716

*16 mm
22 x 27*



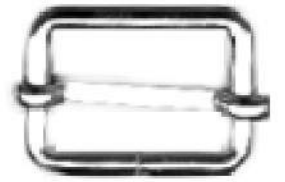
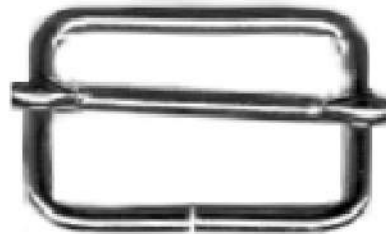
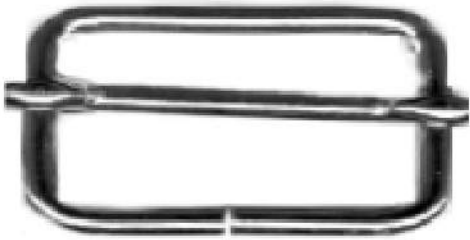
205920

*Innen : 20 mm
25 x 38*

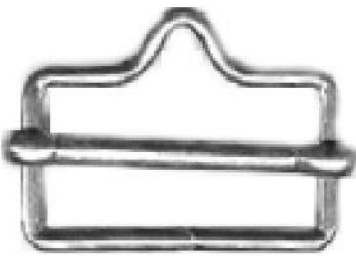


205916

Gurtschließen



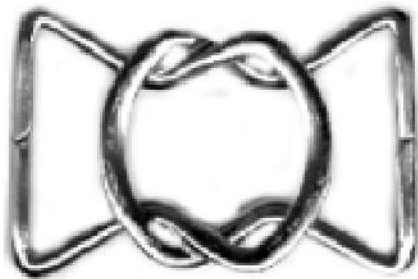
2128 50-40-35-30-25-20 mm



212935

212930

212775 mm



211525

Innen : 25 mm
52 x 33
Ringstärke : 2,5 mm

211520

20 mm
56 x 29
2,5 mm

Material : *Stahl vernickelt*
" *Steel nickel plated*

Schlaufen flacher Draht



207840
Innen : 40 mm
Draht : 3,5 mm



207835
35 mm
3,5 mm



207830
30 mm
3,5 mm



207825
25 mm
3,5 mm



207822
Innen : 22 mm
Draht : 3,5 mm



207820
20 mm
3,5 mm



207818
18 mm
3,5 mm



207816
16 mm
3 mm



207814
Innen : 14 mm
Draht : 3 mm



207812
12 mm
3 mm



207810
10 mm
3 mm

Schlaufen und Spitzen massive Ausführung



2333740
Innen : 40 mm
Stärke : 10 mm



2333735
35 mm
10 mm



2333730
30 mm
10 mm



2333840
Innen : 37 mm
Stärke : 6 mm



2333835
32 mm
6 mm



2333830
27 mm
6 mm



D/ 482 35 mm



GX9094TC 35mm



**GX9090TC - 30
drehbar**



C/5555 35mm



C/5551 30mm



C/5555 30mm



C/5797 40mm

N 19 A

Gürtelschließen massiv



207540

Innen: 40 mm
73 x 43 mm



207535

35 mm
65 x 38 mm



207530

30 mm
58 x 33 mm

Finish : nickel sattiniert

Gürtelschließen



15/2895



15/2872



15/3783



8/1301



15/1414



15/mercedes klein



15/1935

N 21

Gürtelschließen



15/3607



15/2004



15/3714



15/3608



15/3573



15/6666

N 22

Gürtelschnallen 4 cm



15/1111 altgold



15/2017 altnickel & altgold



15/4297 altgold



15/2006 altnickel



15/3892 altnickel & altgold



15/2007 Altnickel & altgold



15/3095 altgold



15/3783



15/3088



15/2877

Gürtelschnallen 4 cm



GX9857PL/40AS



GX9225PL/40AS/EML



GX9726PL/40AS



GX9164PL/40BKD



GX2493PL/40AS



GX2497PL/40AS



GX0487PL/40AS



GX9382PL/40BKD



GX2096PL/40AS



GX2364PL/40AS

Gürtelschnallen 4 cm



BY100106



GX2493PL/40AS



BY100225



GX2645PL/40VL/BLK



BY100339



BY023894



GX9379PL/40BKG/VLP



BY100395



BY023416



By100446

Gürtelschnallen 4 cm



BY100107



GX0084PL/40VN/ST



GX9002PL/40AS



GX0096PL/40BK/ST



BY100224



GX2189PL/40AS



GX2242PL/40MVN



GX9377PL/40AS



GX1619PL/40AS

Gürtelschnallen 4 cm



GX2570PL/40AS



GX9052PL/40BKN/VN



GX2571PL/40AS



BY100210



GX9056PL/40MVN/VLP



GX9805PL/40AS



15/3610



GX0488PL/40AS



GX9008PL/50

Schnalle 5 cm

Gürtelschnallen 4 cm



15/1555



15/2873 altsilber/altmessing



15/4003 altmessing/altsilber



15/4260



GX2360PL/40AS



GX9008PL/50



GX1845PL/50CFS



GX0488PL/40AS



BY 100373



BY 100399

Schiebeschliessen PVC



LL 40

Innen : 40 mm
47 x 56



LL 30

30 mm
37 x 46



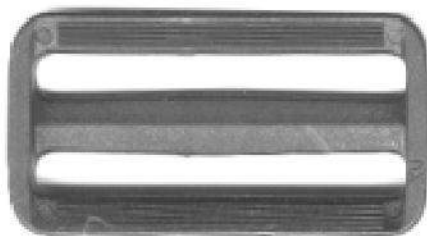
LL 25

25 mm
34 x 41



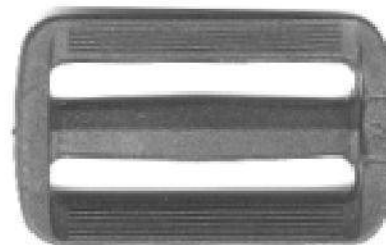
LL 20

20 mm
27 x 39



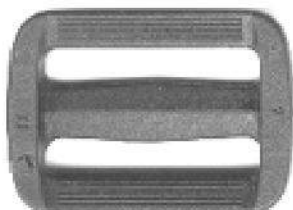
TG 50

Innen : 50 mm
57 x 30



TG 40

40 mm
51 x 31



TG 30

Innen : 30 mm
38 x 27



TG 25

25 mm
34 x 28



TG 20

20 mm
26 x 21

Material : Nylon / Acetal
Farbe : schwarz

N 29



GX9373PL/40



GX1878PL/40



GX1884PL/40



GX2354PL/40



GX10374PL/40



GX9460PL/40 AS



GX9163PL/40 BKD +AS



GX2353PL/40 AS



GX6557/40 AS



GX0899/40 VN/BLK



GX2492PL/40 AS



GX2539PL/40 AS



GX1741PL/40 AS



GX2789PL/40 AS/CF



GX2619PL/40 AS



GX9861PL/40 AS



GX9235PL/40 AS

Reste



GX9235PL/40



GX9277PL/40



GX1983PL/40



GX2230PL/40



GX2574PL/40



GX2365PL/40



GX9989PL/40



15/2222
80 x 58 mm



15/8888
79 x 60 mm



15/4301
84 x 60 mm



15/4031
77 x 53 mm



15/2730
77 x 58 mm



15/2893
77 x 60 mm



15/4077

77 x 57 mm



15/3930

89 x 64 mm



15/2926

74 x 54 mm



15/4062

27 x 58 mm



15/4252

77 x 58 mm



15/4302

84 x 61 mm



15/3088

87 x 59mm



15/1555

75 x 58 mm



15/4379

115 x 60mm



15/4444

76 x 58 mm



15/7777

83 x 64



15/3333

89 x 64 mm

Druckknöpfe



W 226

W 190

Prym 6/4

Prym 4

Prym 2

Kopf 15mm

13mm

17mm

13mm

9 mm

Material : Messing
Finish : vernickelt - vermessingt
altmessing - farbig

Mindestmenge : 100 Stück

O 1

Oesen



4716
Altmessing + Nickel



4714
Nickel + Gold



4713

zum schrauben



4711



4717



4718

zum pressen



3035
Innen: 16mm



zum einschlagen



3031
Innen: 12mm



9273
10mm



3024
8mm



3022
Innen: 6 mm



3047
5 mm



3045
4 mm



3044
3,5 mm

Nieten + Scheiben



316

Kopf / head 14 mm
Stärke / size 3 mm



318

11 mm
3 mm



320

10 mm
3 mm



322

8 mm
2,5 mm



20 x 5

Innen : 5 mm



15 x 5

5 mm



16 x 4

4 mm



15 x 3

3 mm



12 x 3

3 mm



3178

16 mm



29/1

innen : 2 mm



8 x 2,4

2,4 mm



10 x 1,5

1,5 mm



5 x 1,5

1,5 mm

Material : Stahl / vernickelt / vermessingt
" Steel / nickel / brass plated

Spaltnieten + Ziernägel + Stifte



8x20

Kopf :
Schaff :



8 x 16

9,5 mm
4 mm



8 x 11



5 x 19



5 x 14

8 mm
3,5 mm



5 x 11



3 x 20

Kopf :
Schaff :



Schwarz

3 x 19

5,5 mm
3 mm



3 x 16



3 x 14



2 x 19

4 mm
2 mm



000001

Kopf : 12,5 mm
Höhe : 8 mm



000005

8,5 mm
5 mm



1505

17 mm
5 mm



1507

14 mm
4 mm



25/50

Kopf : 5 mm
Stärke : 2,5 mm



16/40

3,7 mm
1,6 mm



18/40

4 mm
1,8 mm



16/30

3,5 mm
1,6 mm



20/25

4,5 mm
2 mm



14/25

2,9 mm
1,4 mm

Material : Stahl vernickelt / vermessingt



30/25

Kopf : 6 mm



14/20

4,2 mm



15/15

3,1 mm



12/13

3,2 mm



14/11

3,3 mm



18/12

3,7 mm

Q 2

Hohnieten - Unterteil offen



901520



901215



901212



901115

Kopf / head : 13 mm
Länge / length : 21 mm
Schaft / shaft : 6 mm

13 mm
15 mm
4 mm

13 mm
12 mm
4 mm

10,5 mm
15 mm
3,5 mm



901112



901109



90060507



90090509

Kopf / head : 10,5 mm
Länge / length : 12 mm
Schaft / shaft : 3,5 mm

10,5 mm
9 mm
3,5 mm

10,5 mm
7 mm
3,5 mm

9 mm
9 mm
3,5 mm



900809



900607



900507



900405

Kopf / head : 7 mm
Länge / length : 9 mm
Schaft / shaft : 3 mm

7 mm
7 mm
3 mm

5,5 mm
7 mm
2,5 mm

4 mm
5 mm
2,5 mm

Material : Stahl/ steel
Finish : vernickelt / nickel plated
vermessingt / brass plated

Mindestmenge : 250 - 500 Stück
Minimum Quantity : 250 - 500 pcs.

Hohlrieten - Unterteil geschlossen



904215



904212



904112



904109

Kopf / head : 13 mm
Länge / length : 15 mm
Schaft / shaft : 4 mm

13 mm
12 mm
4 mm

10,5 mm
12 mm
3,5 mm

10,5 mm
9 mm
3,5 mm



90390509



903809



903607



903507

Kopf / head : 9 mm
Länge / length : 9 mm
Schaft / shaft : 3,5 mm

7 mm
9 mm
3 mm

7 mm
7 mm
3 mm

5,5 mm
7 mm
2,5 mm

Material : Stahl / steel
Finish : vernickelt / nickel plated
Vermessingt / brass plated
altmessing / antique brass
schwarz / black

Mindestmenge : 250 - 500 Stück
Minimum Quantity : 250 - 500 pcs.

Bodennägel



1004

Durchmesser : 22 mm
Kopfhöhe : 7 mm



1006

20 mm
7 mm



1006 H

20 mm
12 mm



1008

18 mm
7 mm



1008 H

18 mm
11 mm



1009

Durchmesser : 16 mm
Kopfhöhe : 7 mm



1010

13 mm
6 mm



100 1/3

10 mm



90 1/3

9 mm



20 1/2

7 mm



602

Durchmesser : 16 mm
Kopfhöhe : 11 mm



604

14 mm
9 mm



606

13 mm
8 mm



608

10 mm
7 mm



610

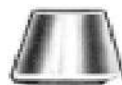
9 mm
5 mm

Material : Stahl vernickelt / vermessingt / altmessing



D/1045

15 x 5mm



614

15 mm
10 mm

zum schrauben
for screwing



618

10 mm
7,5 mm

Zinkdruckguss : vermessingt / vernickelt



8803

55 x 14
15 mm

Plastik schwarz



304

Durchmesser : 20 mm
Kopfhöhe : 13 mm



303

18 mm
10 mm



306

19,5 mm
12,5 mm

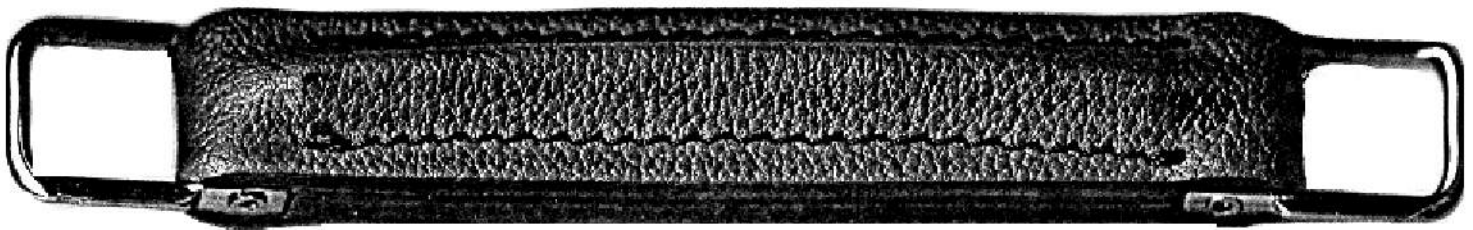


305

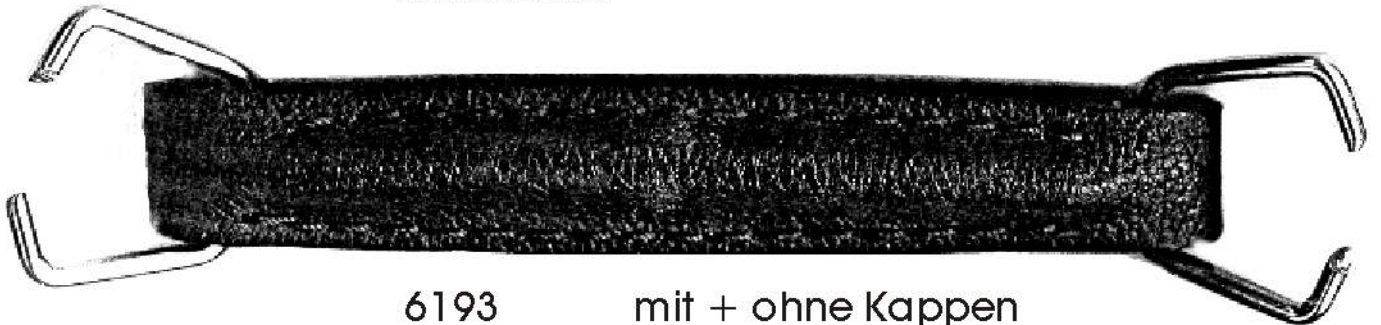
17 mm
10 mm

Material : Kunststoff / Plastik Farbe schwarz

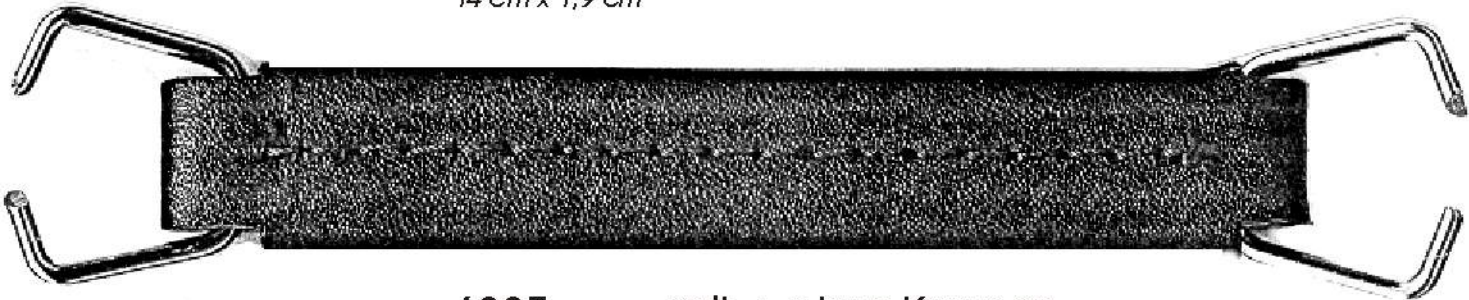
Griffe



6194 mit + ohne Kappen
14,5 cm x 2,5 cm

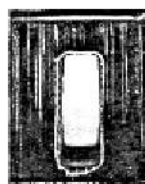


6193 mit + ohne Kappen
14 cm x 1,9 cm



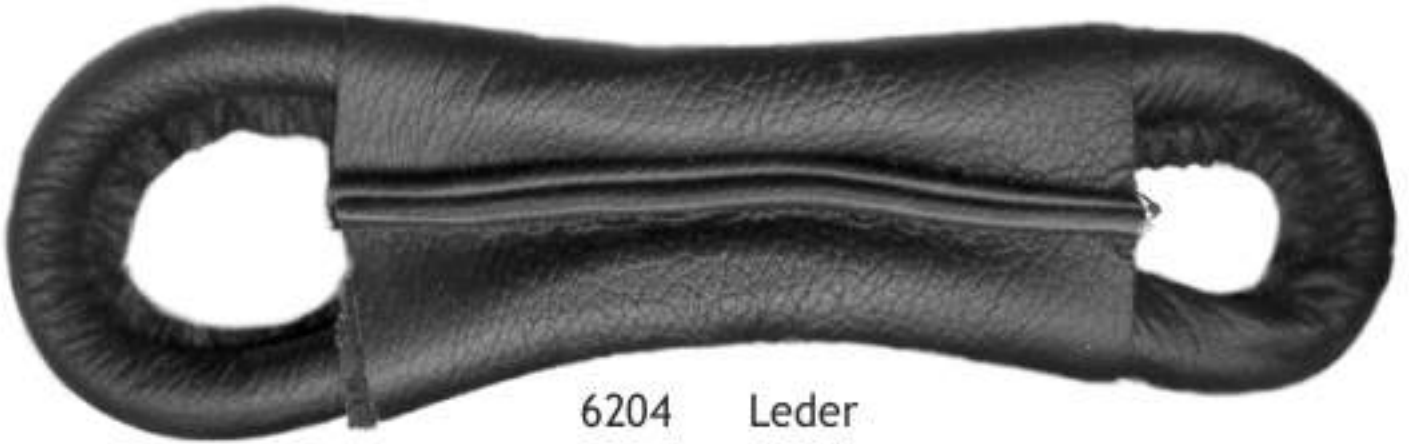
6287 mit + ohne Kappen
14,5 cm x 2 cm

Material : Leder / leather



2069

Griffe



6204 Leder

20cm



6311 Skai

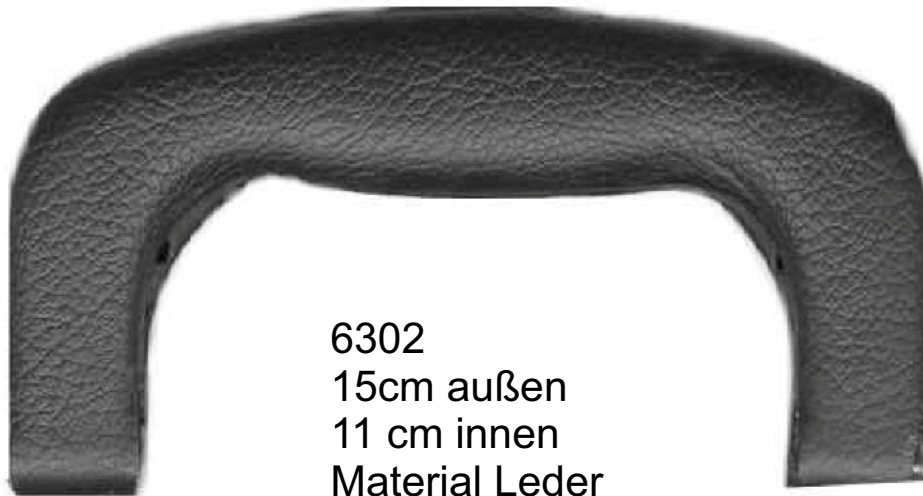
20 cm



6203 Plastik

21,5 cm

Griffe Leder



6302
15cm außen
11 cm innen
Material Leder

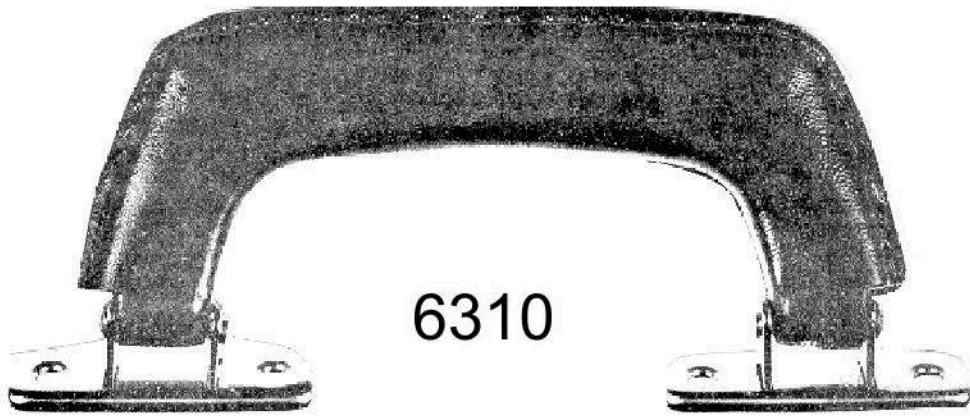


6303
12cm außen
9,5 cm innen
Material Leder



6310 F
14,5 cm außen
10,5 cm innen
Material PVC

Griffe



6310

dunkelbraun und bordeaux



6305

braun



69303662

Griffe



Material : Kunststoff / Farbe schwarz



6317 + 6207



K 898



K 123



6978

Griffe



6296

15,5 cm außen
11 cm innen

Material : Leder



6297

15 cm außen
10 cm innen

Material : Skai



6304

14 cm außen
10 cm innen

Material : Skai
" Leder

Griffe



6298

25 mm

Länge : 35 cm



6219

12 mm

50 cm

Material : Leder



6225

16 mm

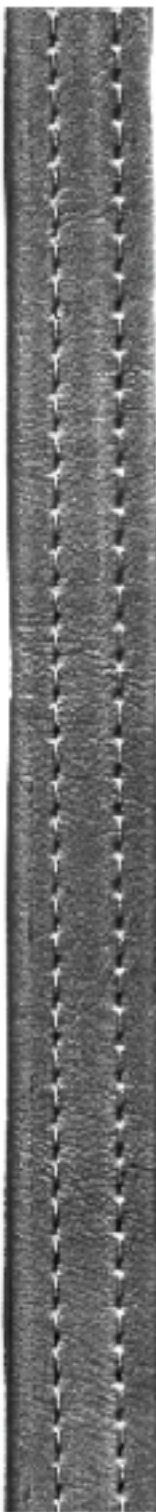
40 cm



6236

20 mm

Material : Skaiband



6234

18 mm

Griffe



622325
25 mm



622320
20 mm
Länge : 140 cm



622314
14 mm



622312
12 mm
Länge : 120 cm



6224
5 mm
5 Meter
Spaghettriemen

Material : Leder

Griffe



6972/262 + 6227 SR



6973 + 6228 SR



6975 + 6228 SR

Griffe



9090 + 6202 NT

210 x 19 mm



9090 + 2765 NT

210 x 19 mm



6911 + 6218 NT

243 x 23 mm

Griffe



2074 + 9044 + 2765 NT

245 x 22 mm



6960 + 9567 + 9542 + 6265 NT

230 x 22 mm

Griffe



6233
25 mm

Länge : 140 cm
160 cm

Kofferriemen



6239
Velourlederriemen



6238
Rindlederriemen



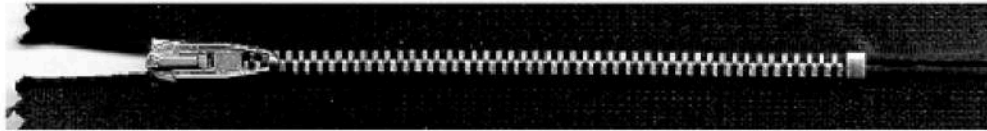
6222
10 mm
110 cm



6230
20 mm
Länge 25 cm
" 30 cm
Meterware
25 Meter
16mm breite
20mm breite

Material : Leder

Reissverschluß Metall



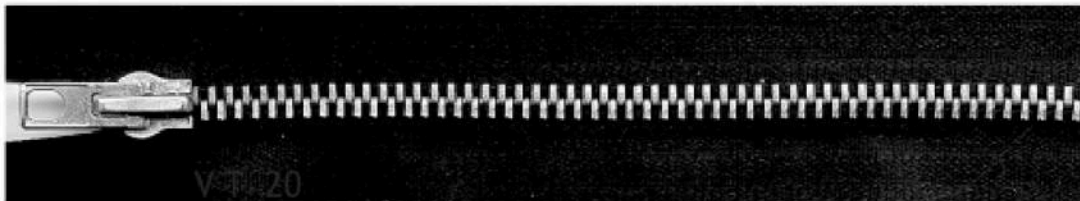
VT 0

Meterware + Stückreißverschlüsse
 sold by meter + finished fasteners
 Mindestmenge : 5 Meter / 25 Stück
 minimum Quantity : 5 meter / 25 pcs.



VT 10

Meterware + Stückreißverschlüsse
 sold by meter + finished fasteners
 Mindestmenge : 5 Meter / 10 Stück
 minimum Quantity : 5 meter / 10 pcs.



VT 20

Meterware + Stückreißverschlüsse teilbar
 sold by meter + finished fasteners separat
 Mindestmenge : 5 Meter / 5 Stück
 minimum Quantity : 5 meter / 5 pcs.

MATERIAL :
 FINISH :
 STOFF :

METALL / STEEL
 VERNICKELT / VERMESSINGOT / ALTMESSING
 NICKELLED - BRASS PLATED / BRASS ANTIQUE
 SCHWARZ / BRAUN / BLACK - BROWN ETC.



Schieber solo lieferbar

U 1

Reißverschlüsse Spiralband



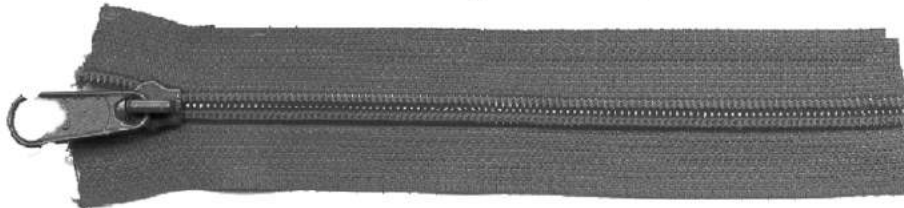
VTD 0

Meterware + Stückreißverschlüsse
Mindestmenge : 5 Meter / 25 Stück



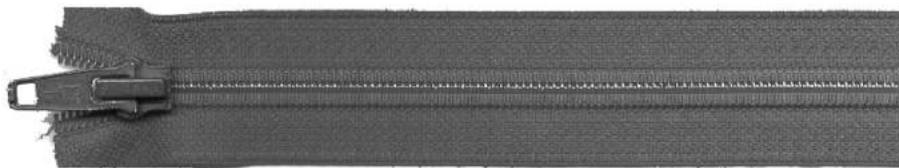
VTD 10

Meterware + Stückreißverschlüsse
Mindestmenge : 10 Meter / 10 Stück



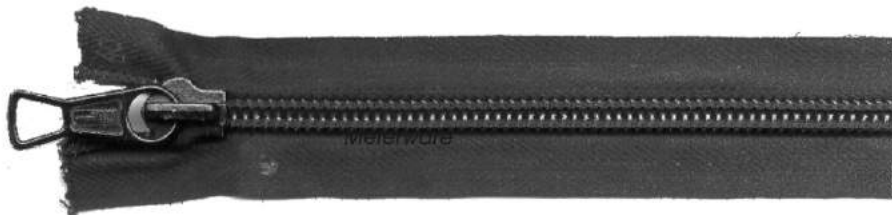
**VTY10
YKK**

Meterware + Stücklänge
Mindestmenge 10 Meter



VTP 20

Meterware + Stückreißverschlüsse teilbar
Mindestmenge : 5 Meter / 5 Stück



RTY 20

Meterware
Mindestmenge : 5 Meter



U 2

Schieber solo lieferbar mit und ohne Bremse

Schienen



4099 40 cm
42 cm
45 cm
Breite : 25 mm
Stärke : 2 mm



Auch nach Maß lieferbar mind. 100 Stück
4092 38 cm
40 cm
42 cm
20 mm
2 mm
Material : Bandstahl



409133
38
40
15 mm
1,5 mm

Nähgarn



Rasant 11 1100 Meter
Rasant 15 1400 "
Rasant 20 1500 "
Rasant 25 2000 "
Rasant 30 2500 "
Rasant 50 5000 "

Baumwolle / Polyester



Rasant 25 500 Meter
Rasant 50 1000 Meter
Baumwolle / Polyester



Serafil 30 300 Meter
Serafil 40 400 Meter



Serafil 10 1000 Meter
Serafil 20 600 Meter
Serafil 30 900 Meter
Serafil 40 1200 Meter

Polyester

W 1

Pflegemittel



990009
Gummimilch E 82 800 gr.



990028
Kontaktkleber 4 kg



990031
Lederfarbe 1/2 Liter



990016
Kantenfarbe 75 ml.



990023
Lederfarbe 40 ml.



990013
Reiniger 50 ml.

X 1

Pflegemittel



990001

Lederspray 400 ml.



990005

Pflegecreme 75 ml.



990004

Juchtenfett



990018

Sattlerseife 200 ml.

X 2

Kofferrollen + FüÙe



2141 / 900

Länge : 12,5 cm
Rolle : 70 mm



2141-601

Skater-Rolle

Länge : 10,5 cm
Rolle : 50 mm



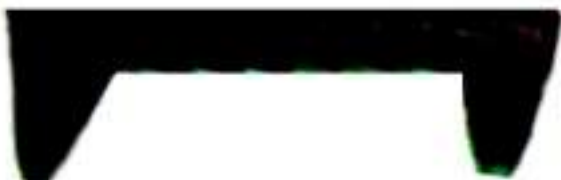
2142 starr

57 x 23 mm
Rolle : 26,5 mm



2142 beweglich

57 x 23 mm
Rolle : 26,5 mm



6941

21cm x 3,5 cm
Höhe 5 cm



6943

80 x 35 mm
Höhe 50 mm

Schlüsselhalter



D 283



D 286



D 284



D 287



D 230/20



D 402/20



D 187/22



D 200/30



D 230/ S

Z 1

Gurt + Gummiband + Moiree



6012140

*Moiree = Futterstoff / lining
Farbe : schwarz braun bordeaux*



**6019 / 20 mm / 25 mm / 30 mm
40 mm / 50 mm**

*Polyester Gurtband schwarz
Material : Polypropylen*



601830

*Gurtband 30 mm breit
Material : Baumwolle / cotton
Farben : schwarz / braun / weiss*



**6017 / 20 mm / 25 mm
30 mm / 50 mm**

*Klettband = { Hakeln + Flauschband }
Material : Polyamid
Farbe : schwarz*



6016

*Gummiband
Breiten : 15 - 20-30-40-50-70-100-120 mm
mind.Abnahme ab 50 Meter*



5054

50 cm



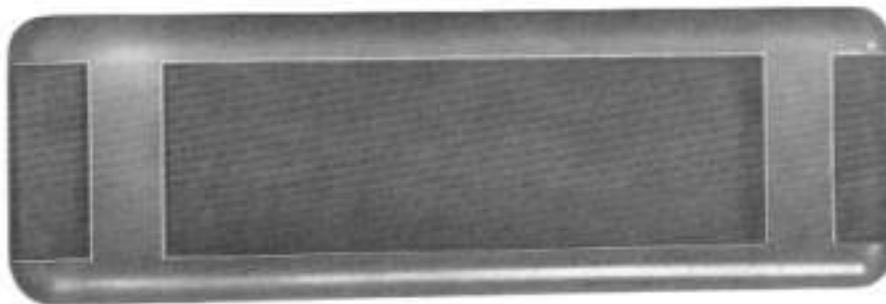
5050

11,5 cm



5051

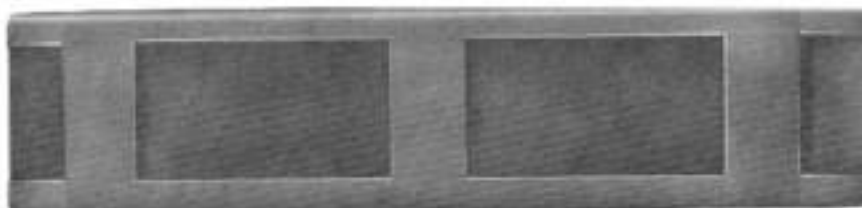
Stahl : vernickelt / vermessingt



644530 + 40

150 x 50 mm

Innen : 30 mm + 40 mm



644520 - 23 - 25

146 x 34 mm

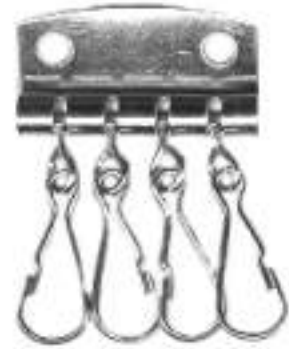
Innen : 20 mm - 23 mm - 25 mm

Sonstiges



201406

Platte : 47 x 18 mm
+ Haken 46 mm



201404

32 x 19 mm
46 mm

Stahl : vernickelt / vermessingt



M/ 95019



M/ 95018 6 cm
8 cm
9 cm

Federstahl



5052

12 cm



5053

9 cm

Stahl : vernickelt

Applicationen



GX 1281 AS



GX 1286 AS



GX 1287 AS



GX 1283 AS



GX 1280 AS



GX 1279 AS



GX 1282 AS



GX 1284 AS



GX 1285 AS



GX 2500PL 20

Z 6

Applicationen



C/5051



C/6195



C/4081



K/1158

9 - 12 - 14 mm



15/3681

12mm



15/3741



15/3714



15/1045



15/1649



15/1523



7128
9 cm



7127
8 cm

Stahl: vermessingt



4671
47mm

Jeansknopf



770083
17mm



45833022

Kopf 10mm
Teller 12mm
Höhe 13mm
Schaft 5mm
Schafthöhe 8 mm



4586

Kopf 5mm
Höhe 9mm



4583

8mm
10mm



4584

6mm
10mm



4657

9mm
5mm



000668
12mm



4663
6 mm

Kordelstopper + Klemmschnallen PVC



CF STD 4



CF Mini 4



Toaster

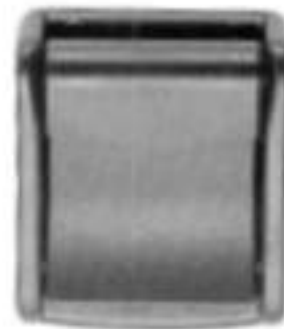


ECL



HPCB 325

innen 25 mm



HPCB 320

innen 20 mm

Material Kunststoff



HPCB 350

innen 50 mm



HPCB 330

innen 30 mm

Impressum

Rudolf Forstmann GmbH

Geschäftsführer : Thomas Wild

Handelsregister Nr. 4879

Amtsgericht Offenbach

Steuernummer : 1103524265051

Erfüllungsort und Gerichtsstand

Ist Offenbach am Main

USt-IdNr. De 113582728

Telefon 069 883227

Telefax 069 8002178

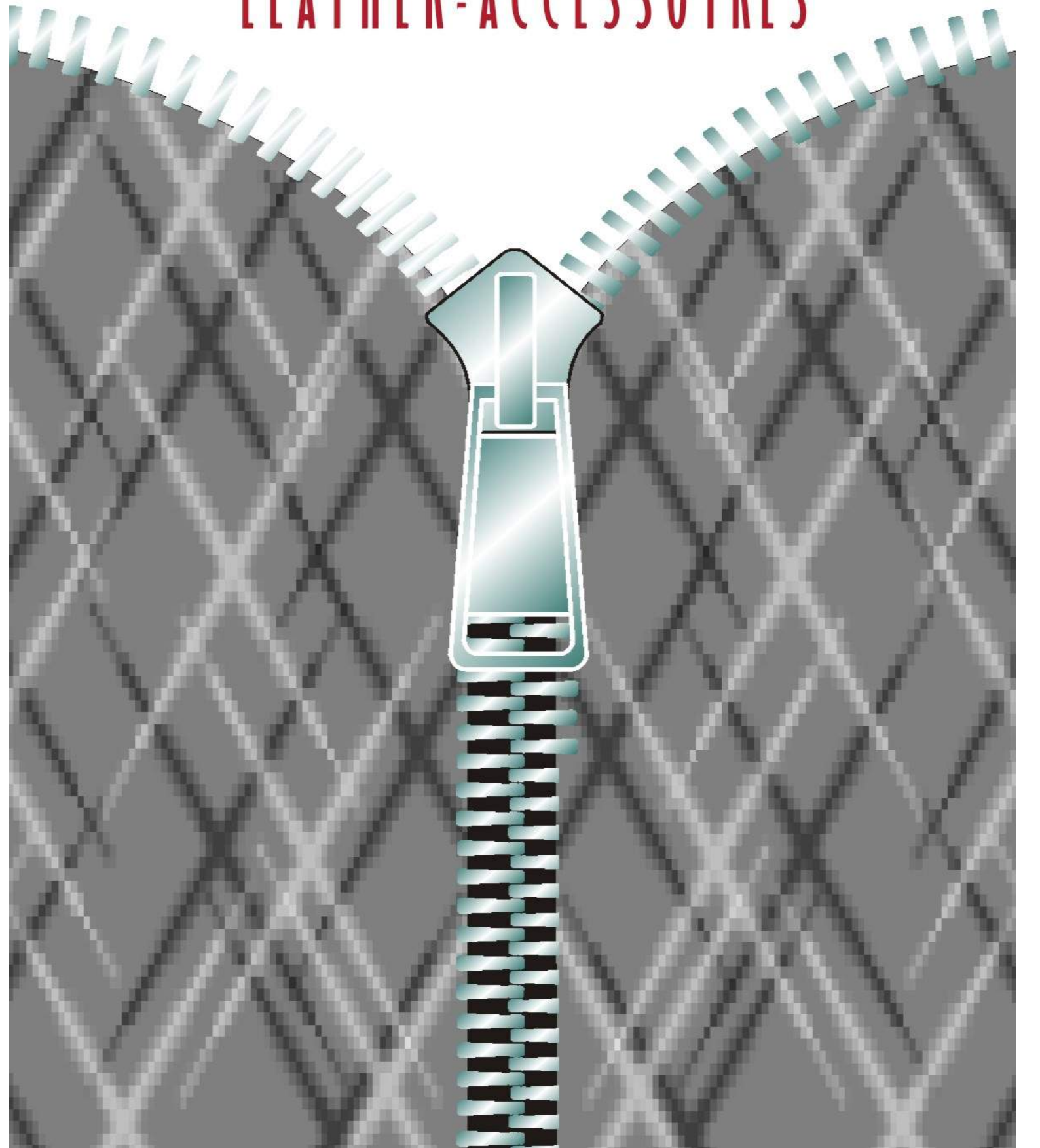
Mail forstmann@rudolf-forstmann.de



RUDOLF
FORSTMANN

G M B H

LEATHER-ACCESSOIRES



Restposten



212920 %8,00 ‰ 55,00
 2.900 Stück Nickel
 24 x 17 mm innen 20mm



2086518 % 29,00 ‰ 245,00
 1035 Stück Altmessing
 40 x 18 x 4 innen 32mmv



207030 St. 0.40
 28 Stück Altmessing
 40 x 44 mm innen 30mm



207025 Stück 0,40
 60 Stück Gold
 40 x 40 mm innen 25mm



207125 Stück 0,25 ‰ 18,00

Gold 200 Stück

35 x 30mm innen 25mm



207220 Stück 0,65

Nickel glanz 30 Stück

Altnickel 76 Stück

30 x 30mm innen 20mm



207210 Stück 0,20 ‰ 15,00

Gold 560 Stück

24 x 16 mm innen 10mm



ETG 50 PVC 800 Stück % 19,00
56 x 38 mm innen 50mm



RR 40 400 Stück % 14,00



TK 30 PVC 250 Stück % 18,00
40 x 43 innen 30mm



SG 25 4000 Stück % 10,00 %o 80,00

G 30 1000 Stück % 10,00 %o 80,00
38x26mm innnen 30mm



1.800
% 8,00
%o 50,00



100 Stück
Stück 0.50

BLS 30 Schlaufe PVC

5115 schwarz Zinkdruckguss zum Schrauben

35 x 12 innen 30mm

15mm hoch 15mm innen



Kederband 4 x 10 Fähnchen 10mm ober rund 4mm schwarz
5 Pack 1 Pack 45 Meter € 25,00



Einlageband 3 mm rund PVC klar ca 450 meter
1Posten € 20,00